

# TAPPED IN

Bringing you news, updates and information from Watercare



**2.5m** The number of people living in Auckland in 30 years.

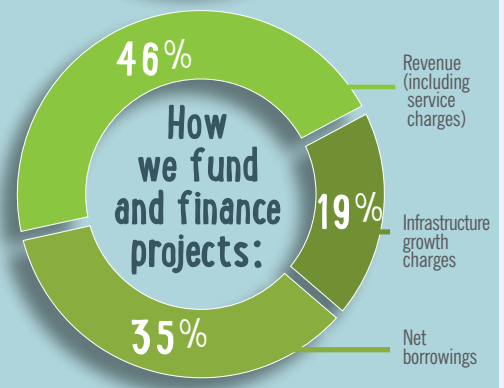
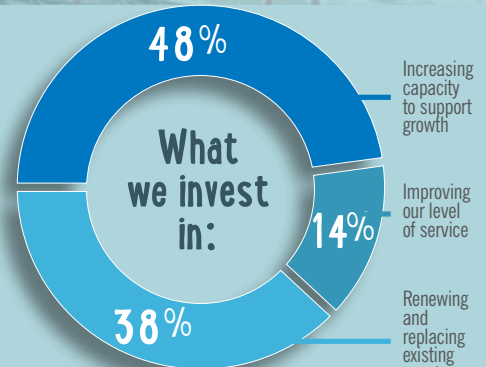
An aerial shot during construction of the biological nutrient removal facility at the Māngere Wastewater Treatment Plant, late 2017. Beginning operation in the next few months, this upgrade will enable the plant to cater for Auckland's increased wastewater demand.

## Grow with the flow

You may have noticed our staff and contractors hard at work around Auckland. We're busy doing important network upgrades and building new infrastructure so we can keep providing safe and reliable water and wastewater services as the city's population grows.

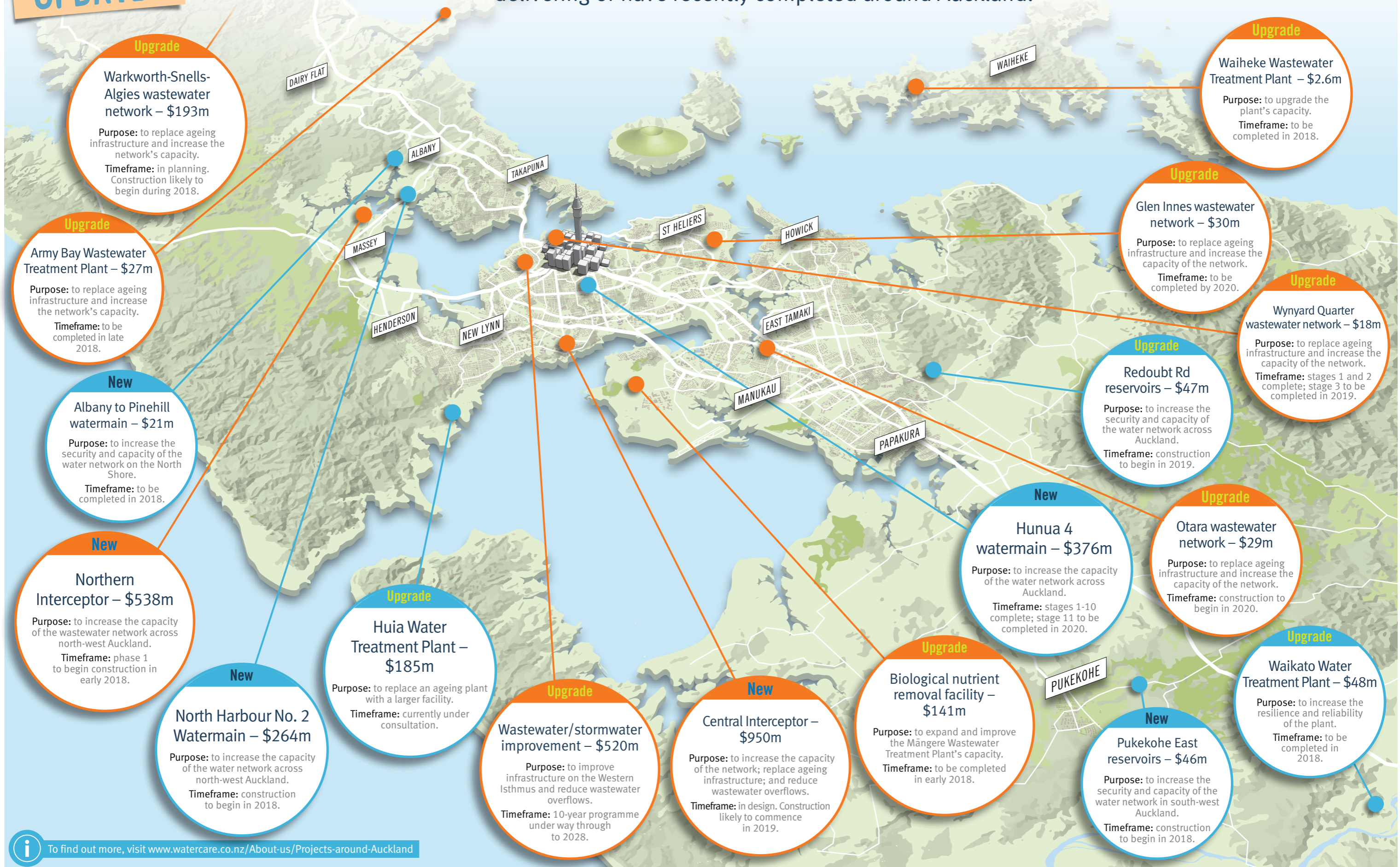
Right now, we serve 1.5 million Aucklanders. Over the next 30 years, this figure is forecast to grow by another one million people so we need to make sure our networks and infrastructure are up to the challenge. And that's why we're busy planning and delivering projects.

We align our work with Auckland Council's development priorities – that means our projects are being done where and when they will be needed most. We're also investing \$5.5 billion in upgrading and expanding our infrastructure over the next 10 years – \$3.6 billion for wastewater and \$1.9 billion for water – which will help us to support the city's growth. Our projects are paid for by a combination of water and wastewater service charges, infrastructure growth charges, and borrowings. We don't receive any funding from the council or the Government.



# UPDATED MAJOR PROJECTS

Below are just some of the large projects that we are planning, delivering or have recently completed around Auckland.



### What do the water-efficiency labels on appliances actually mean?

You'll find blue water-efficiency labels on many products that use water, such as washing machines, dishwashers and toilets.



The star rating shows you how efficient the product is compared to others. The more stars, the more water-efficient.

The water consumption or water flow figure tells you how much water the product uses. The measurement is:

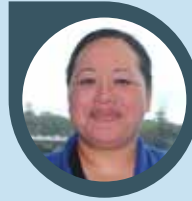
- Litres per minute for showers and taps
- Litres per wash for washing machines and dishwashers
- Litres per flush for toilets

For an 8kg washing machine, switching from a 3-star machine to a 4.5-star machine could save around 49 litres per wash. That means if you do five loads a week you could save around 14,000 litres per year – that's 140 bath-tubs full.

For more information, visit [www.mfe.govt.nz/fresh-water/we-all-have-role-play/water-efficiency-labelling-scheme](http://www.mfe.govt.nz/fresh-water/we-all-have-role-play/water-efficiency-labelling-scheme)

Source: Ministry for the Environment

### Ask Nisi



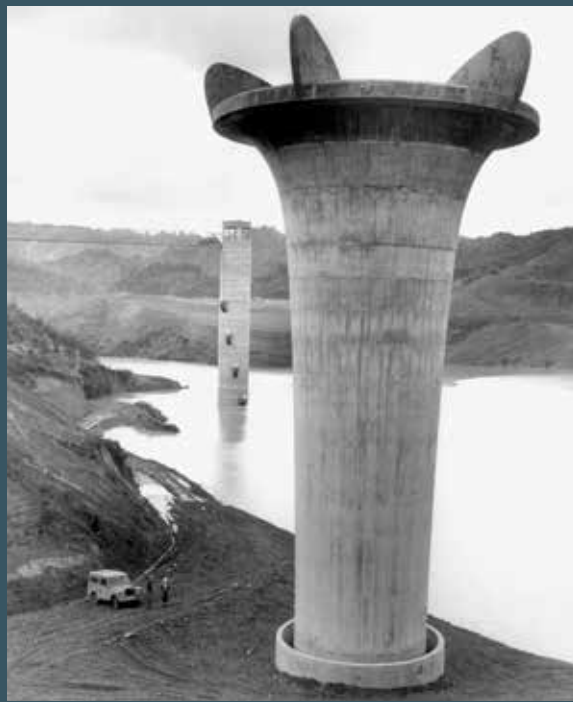
### Join our customer panel

Watercare has lots of new ideas about how to make things better for our customers now and in the future.

We're setting up a customer panel so we can share these ideas and ask for feedback before launching new initiatives. As a member of this panel, you will be invited to take part in surveys and online discussions, with opportunities to win prizes.

If you're interested in joining our panel, email your name and contact details to [customerpanel@watercare.co.nz](mailto:customerpanel@watercare.co.nz) and we'll be in touch.

## The Mangatangi Dam in the Hunua Ranges is our largest water reservoir.



Construction of the Mangatangi Dam spillway, with the control tower in the distance, in the 1970s.



The Mangatangi Dam as it is today.



Completed: 1977  
Lake area: 185 hectares  
Capacity: 35.3 gigalitres

A gigalitre is exactly one billion (1,000,000,000) litres.

### KEEP IN TOUCH

*Tapped In* is your newsletter. If you would like to talk to us about any stories from this edition or your ideas for future issues, we'd love to hear from you. To get in touch, please email our communications team at [communications@water.co.nz](mailto:communications@water.co.nz). You can learn more about what we do at [www.watercare.co.nz](http://www.watercare.co.nz).