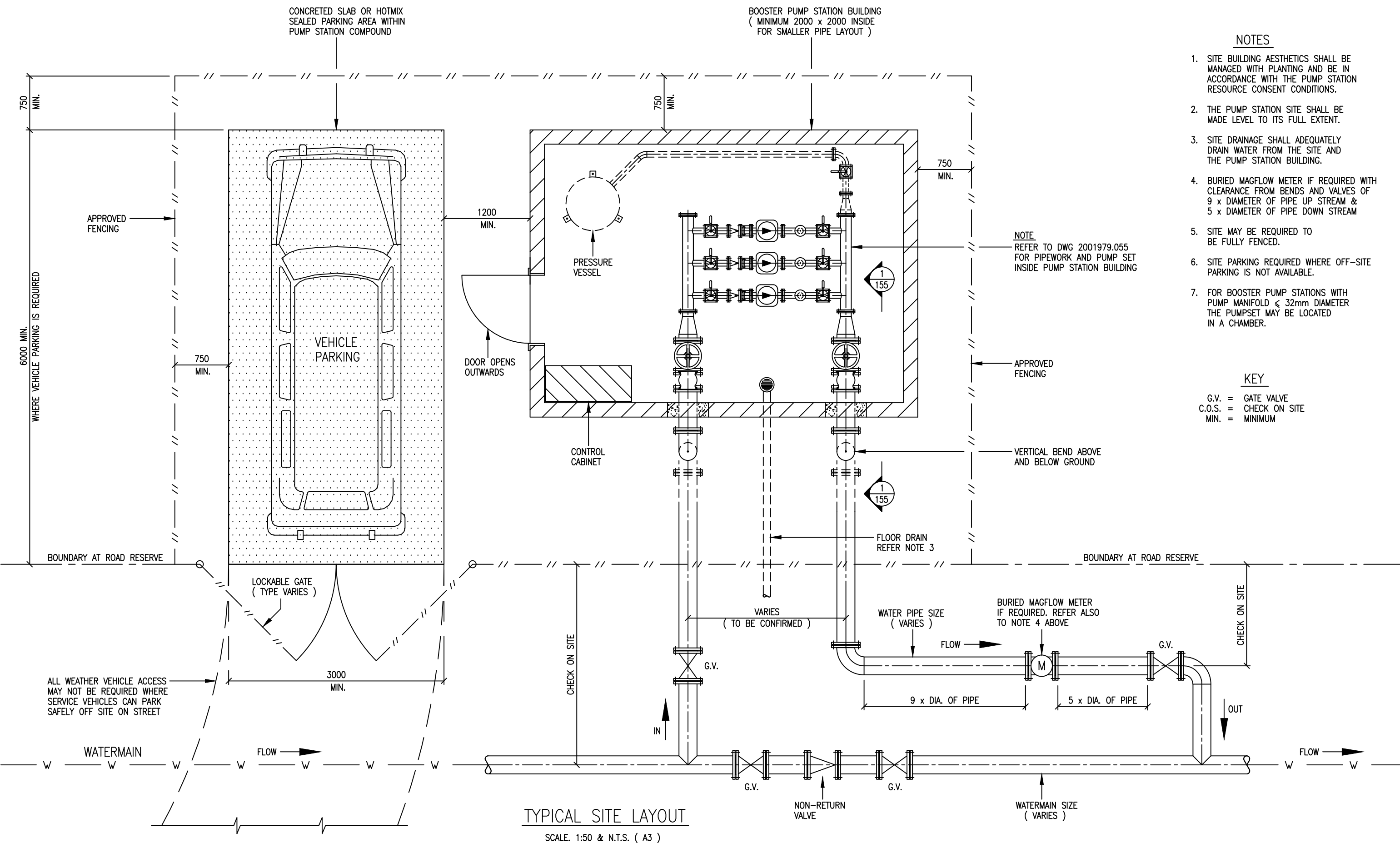


Drawing Index

Name	Doc.No	Document Description
2001979.154.pdf	2001979.154	Typical water network booster pump station site layout
2001979.155.pdf	2001979.155	Typical water network booster pump station pump set detail section



L:\---\EGCAD\F\2015\STANDARD WATER DRAWINGS\2001979.154 .DWG

DESIGNED	J.D.	05-15			
DES. CHECKED	G.S.	05-15			
DRAWN	L.C.	05-15			
DWG. CHECKED	I.M.	05-15			
PROJECT LEADER	J.D.	05-15			
INFRASTR APP'D	A.S.	05-15			
ISSUE	DATE	AMENDMENT	BY	APPD.	BY
-	05:15	CONSTRUCTION ISSUE	L.C.	J.D.	

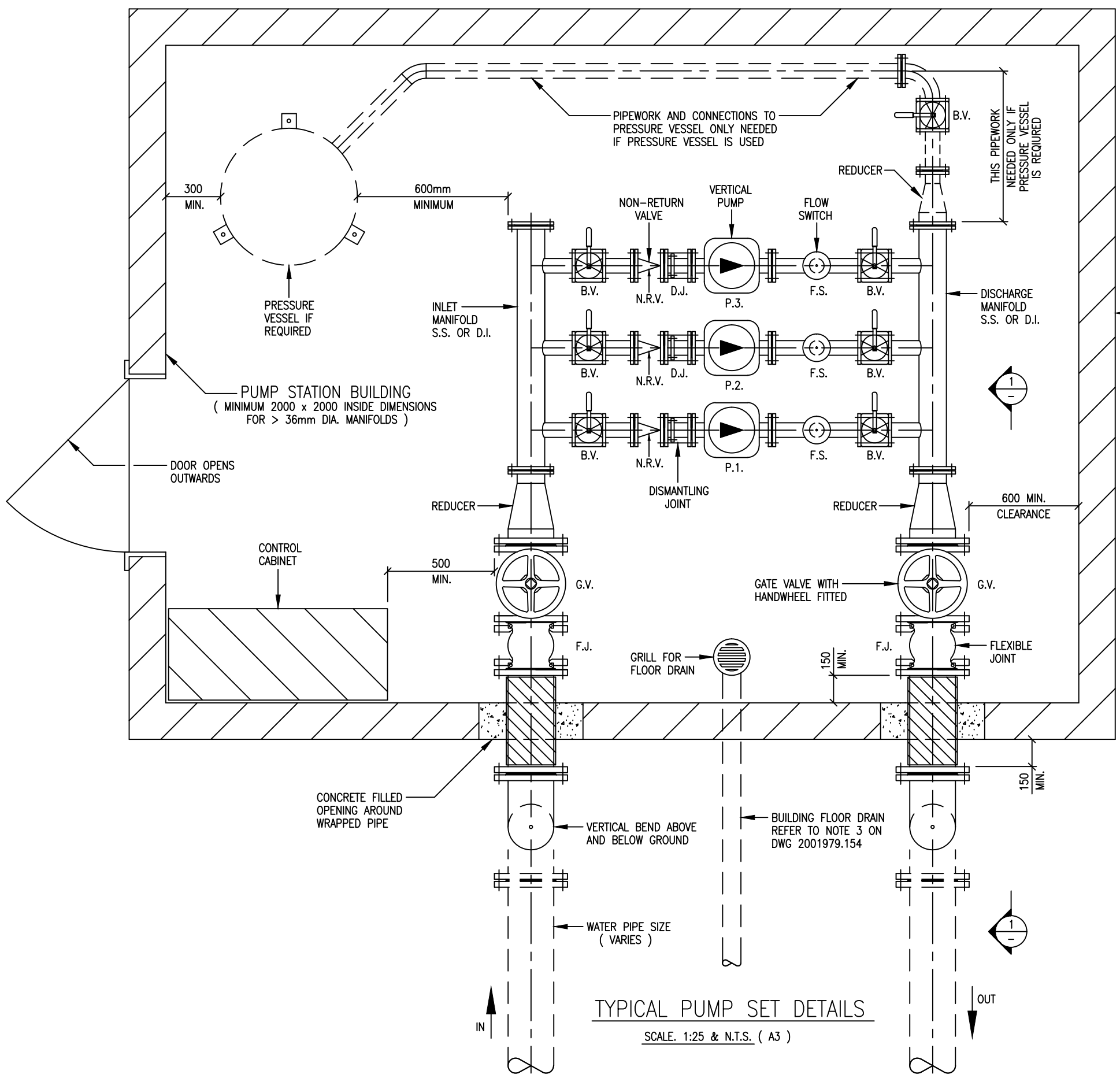
SIGNATORY 1	
OPERATIONS	
SIGNATORY 2	
INFRASTRUCTURE	

Watercare

WATER RETICULATION STANDARD
WATER NETWORK BOOSTER PUMP STATION
TYPICAL SITE LAYOUT

COPYRIGHT - This drawing, the design concept, remain the exclusive property of Watercare Services Limited and may not be used without approval. Copyright reserved.

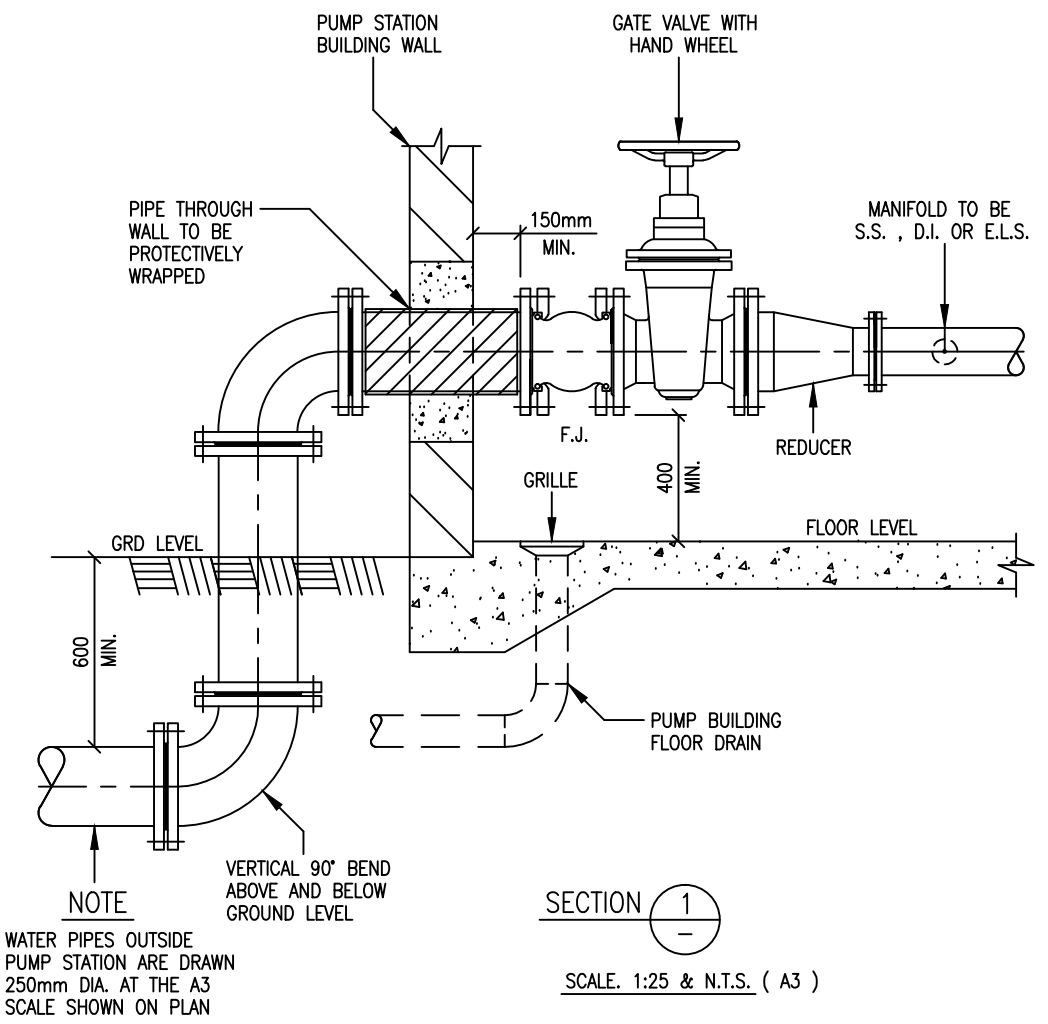
CAD FILE	2001979.154	DATE	12-05-15
ORIGINAL SCALE	A1	CONTRACT No.	-
AS SHOWN			
REF. No.	-	ISSUE	-
DWG. No.	2001979.154		



TYPICAL PUMP SET DETAILS
SCALE: 1:25 & N.T.S. (A3)

- KEY**
- B.V. = BALL VALVES FOR PIPE DIA. < 50mm
 - * = BUTTERFLY VALVES FOR PIPE DIA. > 50mm
 - G.V. = STEEL GATE VALVE
 - D.I. = DUCTILE IRON
 - F.J. = FLEXIBLE JOINT
 - N.R.V. = NON RETURN VALVE
 - F.S. = FLOW SWITCH
 - P.1 = PUMP No1
 - P.2 = PUMP No2
 - P.3 = PUMP No3
 - C.O.S. = CHECK ON SITE
 - MIN. = MINIMUM

- NOTES**
1. ALL THE ABOVE GROUND PIPE WORK OR TRANSITIONING FROM GROUND TO SURFACE TO BE STAINLESS STEEL, DUCTILE IRON OR E.L.S. WITH FLANGE CONNECTIONS.
 2. THE PUMP STATION MAY BE EITHER ' PACKAGED ' SYSTEMS OR FABRICATED.
 3. PUMP SETS SHALL BE IDENTICAL AND OPERATE ON AUTOMATIC DUTY , STAND BY ARRANGEMENT.
 4. THE PUMP STATION BUILDING SHALL BE SUITABLY INSULATED AGAINST NOISE TO COMPLY WITH THE COUNCIL REGULATIONS.
 5. THE PUMP STATION DOOR ACCESS SIZE SHALL ALLOW FOR REMOVAL OR REPLACEMENT OF ANY OR ALL OF THE COMPONENTS.
 5. FOOTINGS SHALL BE PROVIDED UNDERNEATH LARGE VALVES , MANIFOLDS AND PUMP SETS.



L:\---\EGCADP\2015\STANDARD WATER DRAWINGS\2001979.155 .DWG

DESIGNED	J.D.	05-15			
DES. CHECKED	G.S.	05-15	SIGNATORY 1		
DRAWN	L.C.	05-15	OPERATIONS		
DWG. CHECKED	I.M.	05-15	SIGNATORY 2		
PROJECT LEADER	J.D.	05-15	INFRASTRUCTURE		
INFRAS'TR APP'D	A.S.	05-15			
ISSUE	DATE	AMENDMENT	BY	APPD.	DATE
-	05:15	CONSTRUCTION ISSUE	L.C.	J.D.	

Watercare

COPYRIGHT - This drawing, the design concept, remain the exclusive property of Watercare Services Limited and may not be used without approval. Copyright reserved.

WATER RETICULATION STANDARD
WATER NETWORK BOOSTER PUMP STATION
TYPICAL PUMP SET DETAILS

CAD FILE	2001979.155	DATE	12-05-15
ORIGINAL SCALE	A1	CONTRACT No.	-
AS SHOWN			
REF. No.	-	ISSUE	-
DWG. No.	2001979.155		